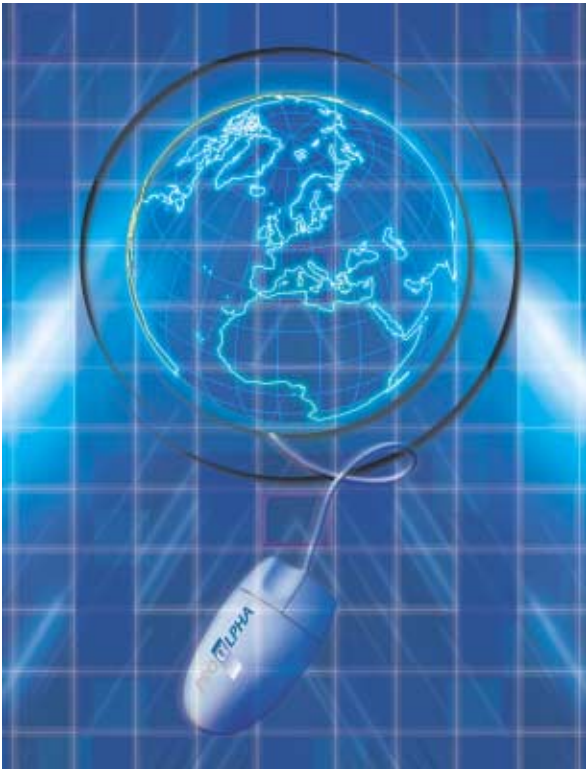


The Complete Solution for the 21st Century



proALPHA® - The Complete Solution for the 21st Century



- **proALPHA® - The Complete Solution for the 21st Century**

The new global economy presents exciting opportunities for growing and mid-sized companies to expand their market base. But only those companies that can react swiftly to rapid change will be able to compete successfully in this new international arena. proALPHA® software provides you with the competitive edge and agility you need to meet today's requirements and profit from tomorrow's opportunities.

- **A secure investment for the future**

proALPHA® gives you the flexible tools you need to respond to market opportunities and exceed the expectations of your customers. proALPHA® uses the technological advantages offered by PROGRESS Software's object-oriented development environment so that installation is not dependent on any hardware or operating system.

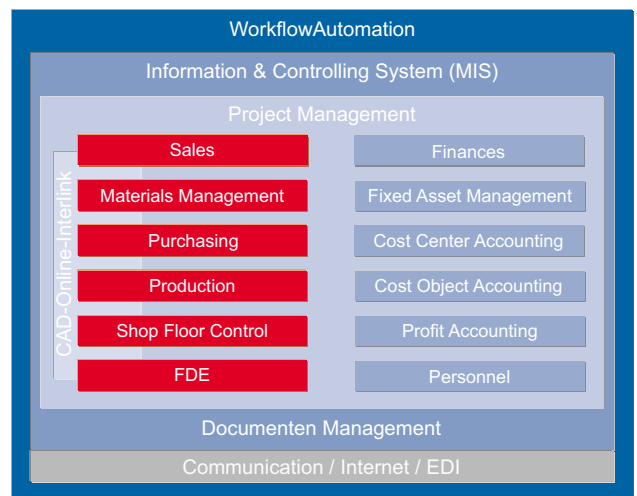
Additionally, your data is protected in the event of a system failure because user transactions are separated from data storage and processing logic. Our restart procedures eliminate interruptions in the critical operations of your business.

PROGRESS Software is a technology leader in distributed data storage, n-level Client Server solutions, and reusable object-oriented programming. These reusable programming components - called SMART OBJECTS - eliminate repetitive work for your applications developers, while preserving the continuity and uniformity of all windows and functions. Your investment in proALPHA® software solutions is furthermore enhanced by our use of global industry standards, including PROGRESS, Microsoft, Java, TCP/IP, ODBC and others. This permits rapid implementation of new standards-based, scalable applications which enhance the effectiveness of your business processes. You will have the power to link all enterprise applications through a single information and control system.

proALPHA®'s modular architecture enables the integration of all data in your system. Managers will have the critical, real-time data they need - right on their desktop - for making strategic decisions.

- **The benefits of integrated functions**

We at proALPHA® have always been committed to providing solutions for the mid-sized manufacturing company. This single-minded focus has permitted us to develop standard solutions for every aspect of your business, from order-entry to production and accounting. In developing standard solutions, proALPHA® places equal importance on the two principal functions in a manufacturing environment: logistics and finance.



Complete Solu

The result is a fully integrated system that allows you to identify enterprise-wide flows of materials and costs. A change in your inventory, for example, results in a simultaneous change in both the Materials Management and Accounting modules. Customized programs can be seamlessly integrated and quickly released by virtue of built-in “User Exits”.

We are also committed to the continuous development and improvement of our integrated solution. To maintain our position as a technology leader we constantly review the newest breakthroughs in software technology as well as changes in the business environment. Our most important source for software development, however, is the feedback we get from our customers through implementation projects and workshops.

• **Speed to market: proALPHA® WorkflowAutomation**

As delivery schedules become increasingly tighter, business processes must be continuously rationalized and automated. With WorkflowAutomation, proALPHA® software accelerates your time to market. The technique completely automates order processing, from product sale through technical engineering, manufacture and assembly to shipment.

WorkflowAutomation is based on event-driven process chains. This means that each operation, with the required data, is automatically processed as it appears in the process chain assigned to it. Work is started or stopped by a specific events. You even have the capability of controlling the process chains externally by deploying enterprise-wide communications (EDI, Internet).

Your specialists see only events that pertain to their area of responsibility, for example, outstanding data requirements, planning changes, or suspended activities. Work programs needed to complete the tasks are started directly from his/her action monitor. The object-oriented approach of proALPHA® software allows you to customize Workflow Automation to meet the specific requirements of your business.



• **Time saving tools for managers**

Decision makers want real-time information that crosses through all departments and functions in the organization. And they need a way to get it anytime. Preparation of such data is part of a Management Information System (MIS).

The proALPHA® Information and Controlling System is the most advanced MIS currently available to mid-sized manufacturing companies. Here you choose among various display options, lists, and reports created and modified with the flexible tools provided. Each user determines the content and level of consolidation required within his/her own area of responsibility. Each user gets an assigned privilege code which prevents unauthorized access to any display variant.

High-level rollups can easily be reconstructed and validated down through each reporting level to the original documents. You have the ability to trace the progress or status of a single document forwards and backwards. For example, when a shipping document is displayed, you can see which order is being filled, if and when the customer was invoiced, and check on the actual charges included in the invoice and analyze the line item details on the original invoice.

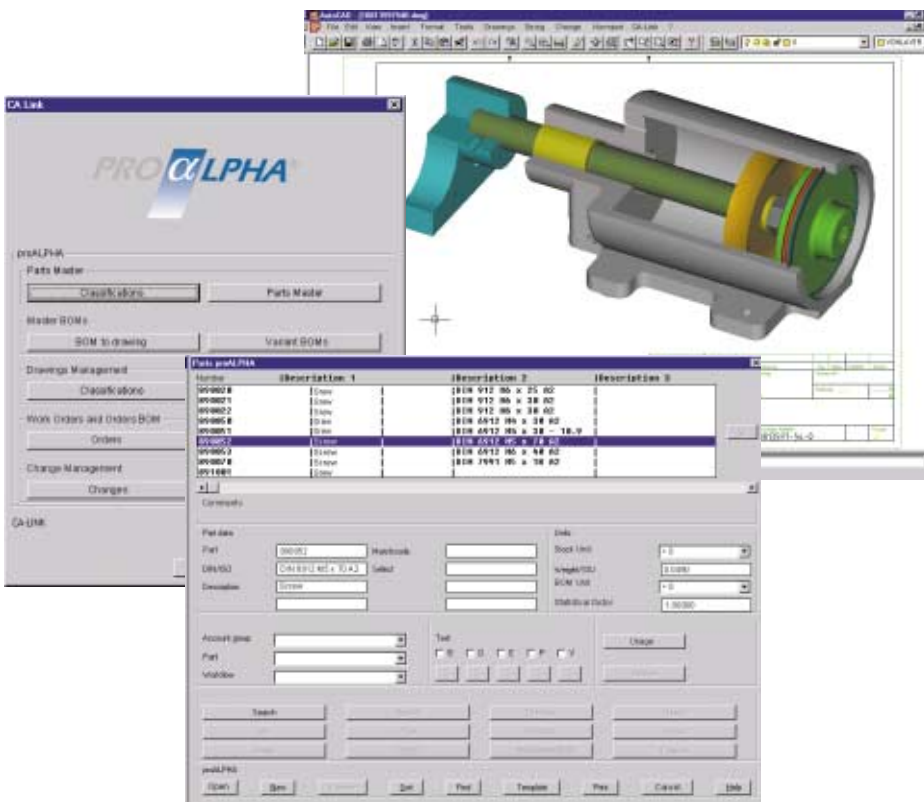
• PPC-CAD Online Coupling

proALPHA[®] CA-Link sets a new standard for business process integration. CA-Link integrates all of the major CAD systems online in proALPHA[®]. This means that no matter which CAD environment the designer uses, he has complete access to data stored in the proALPHA[®] database. Whenever a new drawing or engineering bill of material is filed, the company database is instantaneously expanded. CA-Link eliminates data redundancy, or the need for a service-intensive interface.

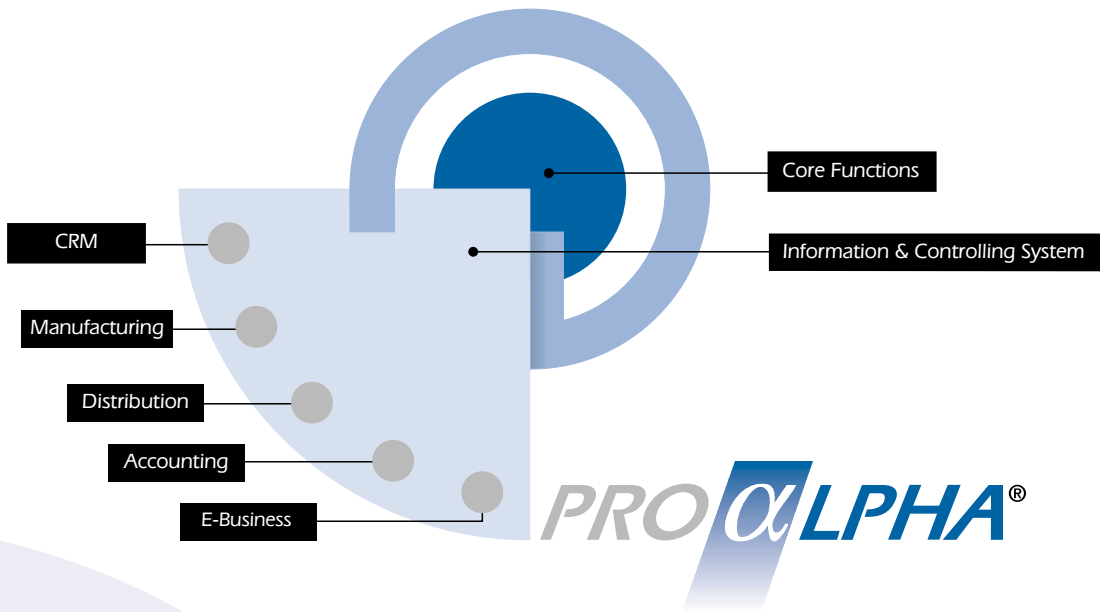
Unique benefits are achieved when deploying the proALPHA[®] WorkflowAutomation. This ensures that every essential link in the process chain, such as the procurement manager, gets the information needed as soon as the engineer releases a new BOM. Accurate product data along with the current drawings produced by the design engineer concerning current and future projects can be called up and displayed at every proALPHA[®] workstation. This is why proALPHA[®] is so much more capable than most Engineering Data

• proALPHA[®] Document Management

The proALPHA[®] Document Management System provides numerous possibilities beyond the normal archiving functions. It is immaterial whether the records are scanned - such as supplier invoices, hand drawn sketches, or test certificates - or imported from MS-Word or Excel. All documents are easily linked and administered together in proALPHA[®]. For example, the sales specialist can "paperclip" the notes from a customer telephone call to the respective customer order. The notes are archived together with the order and both can be reviewed at any time.



- The modular architecture of proALPHA® insures the availability of related data from all applications via the Information and Controlling System.



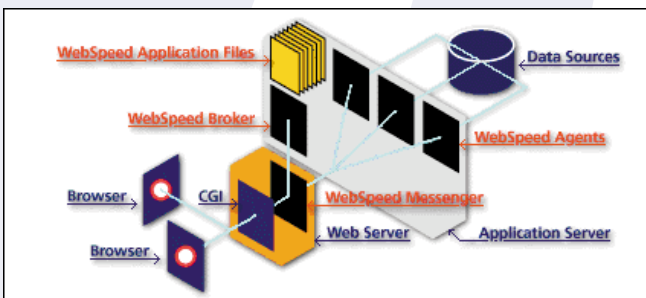
- proALPHA® and the Internet

Commercial use of the Internet has experienced explosive growth recently. Business-to Business (B2B) applications now comprise the fastest growing sector of the Internet. We know that a growing percentage of global business will be transacted over the World Wide Web. Any new enterprise software must support this shift to a Web platform. In selecting PROGRESS WebSpeed, proALPHA Software Corporation has once again built upon a proven, standard tool and developed a high-performance Internet application. The interactive processing capability of proALPHA® goes beyond simple search functions to support order entry and comprehensive e-commerce solutions. The security features of WebSpeed guarantee the integrity of the transaction database.

- The winner is proALPHA®

The journal IS Report recently conducted a comparative study of over 100 software products with applications in the critical functions of manufacturing, distribution, financial accounting and cost accounting. The products were ranked not just on their technical performance capabilities, but also on user-friendliness, upgrade potential and reporting options.

The results are in: ERP Complete solution proALPHA® beat the competition in all categories, and is the clear winner!



Your certified partner: